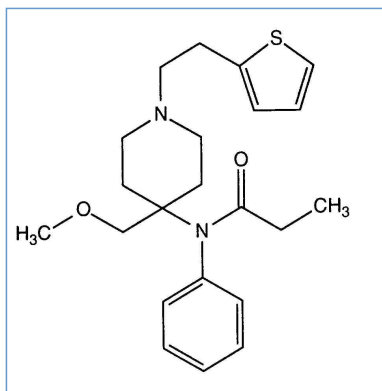


Stabilis



Sufentanil citrate



Noms commerciaux

Fentatiénil	Italie
Sudolfen	Colombie
Sufenta	Afrique du sud, Allemagne, Arabie Saoudite, Autriche, Belgique, Canada, Chili, Danemark, Etats Unis d'Amérique, Finlande, France, Iran, Islande, Luxembourg, Malaisie, Norvège, Pays bas, Pologne, Portugal, Suède, Suisse, Tunisie, Turquie
Zuftil	Mexique



Stabilité des solutions

		0,005 mg/ml	-20°C		5			675
		0,005 mg/ml	32°C		5			675
		0,005 mg/ml	4°C		5			675
		0,005 mg/ml	4°C		5			675
		0,02 mg/ml	4°C		10			1491
		0,005 mg/ml	32°C		3			510
		0,005 mg/ml	4°C		30			510
		0,05 mg/ml	25°C		14			2118
		0,005 mg/ml	-20°C		5			675
		0,005 mg/ml	32°C		5			675
		0,005 mg/ml	4°C		5			675

		0.005 mg/ml	25°C		24				2146
		0,001 mg/ml	21°C		3				1835
		0,001 mg/ml	36°C		1				1835
		0,001 mg/ml	4°C		23				1835
		0,002 mg/ml	21°C		24				1752



Stabilité en mélange

		7 mg/ml	25°C		Palonosetron hydrochloride : 25 µg/ml	4		2196
		0.0062 mg/ml	25°C		Palonosetron hydrochloride : 25 µg/ml	4		2196
		0,02 mg/ml	26°C		Bupivacaine hydrochloride : 3 mg/ml	10		1491
		0,02 mg/ml	37°C		Bupivacaine hydrochloride : 3 mg/ml	10		1491
		0,02 mg/ml	4°C		Bupivacaine hydrochloride : 3 mg/ml	10		1491
		0,001 mg/ml	-30°C		Levobupivacaine hydrochloride : 1,25 mg/ml	120		1938
		0,012 mg/ml	25°C		Bupivacaine hydrochloride : 0,04 mg/ml	43		1909
		0,005 mg/ml	32°C		Bupivacaine hydrochloride : 2 mg/ml	3		510
		0,005 mg/ml	4°C		Bupivacaine hydrochloride : 2 mg/ml	30		510
		0,001 mg/ml	4°C		Levobupivacaine hydrochloride : 1,25 mg/ml	58		1962
		0,001 mg/ml	4°C		Levobupivacaine hydrochloride : 1,25 mg/ml	70		1938
		0,012 mg/ml	4°C		Bupivacaine hydrochloride : 0,04 mg/ml	43		1909
		0,001 mg/ml	4°C		Levobupivacaine hydrochloride : 1,25 mg/ml	58		1908
		0,00075 mg/ml	4°C		Ropivacain hydrochloride : 1,2 mg/ml	180		4522
		0,0005 mg/ml	2-8°C		Bupivacaine hydrochloride : 0,00125 mg/ml	28		2319
		0,03 mg/ml	25°C		Clonidine hydrochloride : 0,015 mg/ml Midazolam hydrochloride : 3,6 mg/ml	7		3705
		0,03 mg/ml	25°C		Lormetazepam : 0,12 mg/ml	7		3705
		0,03 mg/ml	25°C		Midazolam hydrochloride : 3,6 mg/ml	7		3705
		0,03 mg/ml	25°C		Clonidine hydrochloride : 0,015 mg/ml Piritramide : 1 mg/ml Midazolam hydrochloride : 3,6 mg/ml Ketamine hydrochloride : 25 mg/ml Lormetazepam : 0,12 mg/ml	8		3705
		0,0033 mg/ml	25°C		Propofol : 6,7 mg/ml Midazolam hydrochloride : 1,2 mg/ml	24		4011
		0,0033 mg/ml	25°C		Propofol : 6,7 mg/ml Piritramide : 0,33 mg/ml	24		4011

		0,0075 mg/ml	25°C		Propofol : 5 mg/ml Midazolam hydrochloride : 0,9 mg/ml Lormetazepam : 0,03 mg/ml	24		4011
		0,01 mg/ml	25°C		Dexmedetomidine : 6,6 µg/ml Propofol : 6,7 mg/ml	24		4011
		0,01 mg/ml	25°C		Propofol : 6,7 mg/ml Clonidine hydrochloride : 0,005 mg/ml	24		4011
		0,015 mg/ml	25°C		Propofol : 10 mg/ml	24		4011
		0,027 mg/ml	25°C		Propofol : 1,8 mg/ml	24		4011
		0,0027 mg/ml	25°C		Propofol : 18 mg/ml	24		4011
		0,0004 mg/ml	30°C		Ropivacain hydrochloride : 1 & 2 mg/ml	30		1665
		0,004 mg/ml	30°C		Ropivacain hydrochloride : 2 mg/ml	30		1665
		0,001 mg/ml	4°C		Levobupivacaine hydrochloride : 1,25 mg/ml	180		4522
		0,003 >> 0,045 mg/ml	2-8°C		Ziconotide acetate : 0,2 >> 3 µg/ml	7		4496
		0,00113 mg/ml	21°C		Levobupivacaine hydrochloride : 1,22 mg/ml	28		1835
		0,00113 mg/ml	36°C		Levobupivacaine hydrochloride : 1,22 mg/ml	28		1835
		0,00113 mg/ml	4°C		Levobupivacaine hydrochloride : 1,22 mg/ml	28		1835
		0,001 mg/ml	4°C		Levobupivacaine hydrochloride : 1,25 mg/ml	180		4522
		0,00075 mg/ml	4°C		Ropivacain hydrochloride : 1,2 mg/ml	180		4522
		1 mg/ml	37°C		Ziconotide acetate : 25 µg/ml	33		2280



Facteur influençant la stabilité

					1752 2119
	PVC				1882
	PVC				1752
	PVC	[5 µg/ml]			509 675
	PVC	20 µg/ml			1491











Compatibilités

	Sufentanil citrate : 0,05 mg/ml Amoxicillin sodium / clavulanic acid : 100/10 mg/ml			3824
	Sufentanil citrate : 0.05 mg/ml Amphotericin B cholesteryl sulfate complex : 0.83 mg/ml			921

	Sufentanil citrate : 0.003 >> 0.045 mg/ml Baclofen : 0.08 >> 1.8 mg/ml		4162	
	Sufentanil citrate : 0.05 mg/ml Bivalirudin : 5 mg/ml		1713	
	Sufentanil citrate : 0.05 mg/ml Caffeine : 10 mg/ml		3964	
	Sufentanil citrate Calcium gluconate		3644	
	Sufentanil citrate : 0.005 mg/ml Cefazolin sodium : 20 mg/ml		3380	
	Sufentanil citrate : 0.005 mg/ml Cefepime dihydrochloride : 125 mg/ml		2141	
	Sufentanil citrate : 0.005 mg/ml Ceftazidime : 83.3 mg/ml		1759	
	Sufentanil citrate : 0.005 mg/ml Ceftazidime : 125 mg/ml		2141	
	Sufentanil citrate : 0.005 mg/ml Cefuroxime sodium : 30 mg/ml		3380	
	Sufentanil citrate Cisatracurium besylate		3601	
	Sufentanil citrate : 0.0125 mg/ml Cisatracurium besylate : 0.1 >> 5 mg/ml		299	
		Sufentanil citrate : 0.03 mg/ml Clonidine hydrochloride : 0.015 mg/ml		3705
	Sufentanil citrate : 0.05 mg/ml Cloxacillin sodium : 100 mg/ml		3012	
	Sufentanil citrate : 0.05 mg/ml Dexmedetomidine : 4 µg/ml		1712	
	Sufentanil citrate : 0.05 mg/ml Etomidate : 2 mg/ml		319	
	Sufentanil citrate : 12.5 mg/ml Fenoldopam mesylate : 80 µg/ml		1803	
	Sufentanil citrate : 0.005 mg/ml Furosemide : 1 mg/ml		3294	
	Sufentanil citrate : 0.005 mg/ml Heparin sodium : 416.7 UI/ml		3294	
	Sufentanil citrate : 0.0125 mg/ml Hetastarch : 60 mg/ml		1721	
	Sufentanil citrate : 0,005, 0,025 & 0,05 mg/ml Insulin aspart : 1 UI/ml		1508	
	Sufentanil citrate : 0.03 mg/ml Ketamine hydrochloride : 25 mg/ml		3705	
	Sufentanil citrate : 0,05 mg/ml Ketamine hydrochloride : 50 mg/ml		4389	
	Sufentanil citrate : 0.05 mg/ml Lansoprazole : 0.55 mg/ml		1625	
	Sufentanil citrate : 0.001 mg/ml Levobupivacaine hydrochloride : 1 mg/ml		1835	
	Sufentanil citrate : 0.00075 mg/ml Levobupivacaine hydrochloride : 1.25 mg/ml		4522	
	Sufentanil citrate : 0.001 mg/ml Levobupivacaine hydrochloride : 1.25 mg/ml		1962	

	Sufentanil citrate : 0.001 mg/ml Levobupivacaine hydrochloride : 1.25 mg/ml		1938
	Sufentanil citrate : 0,001 mg/ml Levobupivacaine hydrochloride : 1,25 mg/ml		1908
	Sufentanil citrate : 0.05 mg/ml Linezolid : 2 mg/ml		1925
	Sufentanil citrate : 0.03 mg/ml Lormetazepam : 0.12 mg/ml		3705
	Sufentanil citrate : 0.05 mg/ml Meropenem : 50 mg/ml		4319
	Sufentanil citrate : 0.03 mg/ml Midazolam hydrochloride : 3.6 mg/ml		3705
	Sufentanil citrate : 0.005 mg/ml Midazolam hydrochloride : 1 mg/ml		3294
	Sufentanil citrate : 0.05 mg/ml Naloxone hydrochloride : 0.4 mg/ml		3408
	Sufentanil citrate : 0,05 mg/ml Norepinephrine bitartrate : 1 mg/ml		4389
	Sufentanil citrate : 0.0125 mg/ml Palonosetron hydrochloride : 50 µg/ml		2196
	Sufentanil citrate : 0.05 mg/ml Paracetamol : 10 mg/ml		4742
	Sufentanil citrate Parecoxib sodium		3504
	Sufentanil citrate : 0.03 mg/ml Piritramide : 1 mg/ml		3705
	Sufentanil citrate : 0.005 mg/ml Potassium phosphate : 1 mmol/ml		3294
	Sufentanil citrate : 0.00288 mg/ml Propofol : 9.6 mg/ml		4080
	Sufentanil citrate : 0.0009 >> 0.03 mg/ml Propofol : 1.8 >> 18.2 mg/ml		4011
	Sufentanil citrate : 0.05 mg/ml Propofol : 2 mg/ml		319
	Sufentanil citrate : 0.00682 mg/ml Propofol : 9.09 mg/ml		4080
	Sufentanil citrate : 0.05 mg/ml Propofol : 10 mg/ml		300
	Sufentanil citrate : 0.00147 mg/ml Propofol : 9.8 mg/ml		4080
	Sufentanil citrate : 0.005 mg/ml Propofol : 20 mg/ml		3294
	Sufentanil citrate : 0.0125 mg/ml Remifentanil hydrochloride : 25 & 250 µg/ml		59
	Sufentanil citrate : 0.00075 mg/ml Ropivacain hydrochloride : 1.2 mg/ml		4522
	Sufentanil citrate : 0.0004 & 0.004 mg/ml Ropivacain hydrochloride : 1 & 2 mg/ml		1665
	Sufentanil citrate : 0.0005 & 0.001 mg/ml Ropivacain hydrochloride : 2 mg/ml		2138
	Sufentanil citrate : 0,0004 >> 0,004 mg/ml Ropivacain hydrochloride : 1 - 2 mg/ml		1516

	Sufentanil citrate : 0.03 mg/ml Sodium oxybate : 200 mg/ml		3705
	Sufentanil citrate : 0.005 mg/ml Temocilline : 83.33 mg/ml		2231
	Sufentanil citrate : 0.05 mg/ml Thiopental sodium : 25 mg/ml		319
	Sufentanil citrate : 0.005 mg/ml Vancomycin hydrochloride : 10 mg/ml		3385



Voie d'administration



Bibliographie

	Type	Source
59	Revue	Trissel LA, Gilbert DL, Martinez JF, Kim MC. Compatibility of remifentanyl hydrochloride with selected drugs during simulated Y-site administration. Am J Health-Syst Pharm 1997 ; 54: 2192-2196.
299	Revue	Trissel LA, Martinez JF, Gilbert DL. Compatibility of cisatracurium besylate with selected drugs during simulated Y-site administration. Am J Health-Syst Pharm 1997 ; 54: 1735-1741.
300	Revue	Trissel LA, Gilbert DL, Martinez JF. Compatibility of propofol injectable emulsion with selected drugs during simulated Y-site administration. Am J Health-Syst Pharm 1997 ; 54: 1287-1292.
319	Revue	Hadzija BW, Lubarsky DA. Compatibility of etomidate, thiopental sodium, and propofol injections with drugs commonly administered during induction of anesthesia. Am J Health-Syst Pharm 1995 ; 52: 997-999.
509	Revue	Roos PJ, Glerum JH, Meilink JW, Zwang L. Effect of pH absorption of sufentanil citrate in a portable pump reservoir during storage and administration under simulated epidural conditions. Pharm World Sci 1993 ; 15: 139-144.
510	Revue	Roos PJ, Glerum JH, Schroeders MJH. Effect of glucose 5% solution and bupivacaine hydrochloride on absorption of sufentanil citrate in a portable pump reservoir during storage and simulated infusion by an epidural catheter. Pharm World Sci 1993 ; 15: 269-275.
675	Revue	Roos PJ, Glerum JH, Meilink JW. Stability of sufentanil citrate in a portable pump reservoir, a glass container and a polyethylene container. Pharm Weekbl [Sci] 1992 ; 14: 196-200.
921	Revue	Trissel LA, Gilbert DL, Martinez JF. Incompatibility and compatibility of amphotericin B cholesteryl sulfate complex with selected other drugs during simulated Y-site administration. Hosp Pharm 1998 ; 33: 284-292.
1491	Revue	Brouwers JRBJ, van Doorne H, Meevis RF, Boersma FP. Stability of sufentanil citrate and sufentanil citrate/bupivacaine mixture in portable infusion pump reservoirs. Eur Hosp Pharm 1995 ; 1: 12-14.

1508	Revue	Voirol P, Berger-Gryllaki M, Pannatier A, Eggimann P, Sadeghipour F. Visual compatibility of insulin aspart with intravenous drugs frequently used in ICU. EJHP 2015 ;22:123-124.
1516	Laboratoire	Ropivacaine (Naropeine®) - Summary of Product Characteristics Mercury Pharmaceuticals Limited 2012
1625	Revue	Trissel LA, Saenz C, Williams YW, Ingram D. Incompatibilities of lansoprazole injection with other drugs during simulated Y-site coadministration. Int J Pharm Compound 2001 ; 5: 314-321.
1665	Revue	Öster Svedberg K, McKenzie J, Larrivee-Elkins C. Compatibility of ropivacaine with morphine, sufentanil, fentanyl, or clonidine. J Clin Pharm Ther 2002 ; 21: 39-45.
1712	Revue	Trissel LA, Saenz CA. Compatibility screening of Precedex during simulated Y-site administration with other drugs. Int J Pharm Compound 2002 ; 6: 230-233.
1713	Revue	Trissel LA, Saenz CA. Compatibility screening of bivalirudin during simulated Y-site administration with other drugs. Int J Pharm Compound 2002 ; 6: 311-315.
1721	Revue	Trissel LA, Williams KY, Baker MB. Compatibility screening of Hextend during simulated Y-site administration with other drugs. Int J Pharm Compound 2001 ; 5: 69-72.
1752	Revue	Jäppinen AL, Hokki H, Rasi AS, Naaranlathi TJ. Stability of sufentanil in a syringe pump under simulated epidural infusion. Int J Pharm Compound 1998 ; 2: 466-468.
1759	Revue	Servais H, Tulkens PM. Stability and compatibility of ceftazidime administered by continuous infusion to intensive care patients. Antimicrob Agents Chemother 2001 ; 45: 2643-2647.
1803	Revue	Trissel, LA, Saenz CA, Ogundele OB, Ingram D, Baker MB. Compatibility of fenoldopam mesylate with other drugs during simulated Y-site administration. Am J Health-Syst Pharm 2003 ; 60: 80-85.
1835	Revue	Jäppinen A, Turpeinen M, Kokki H, Rasi A, Ojanen T, Pelkonen O, Naaranlahti T. Stability of sufentanil and levobupivacaine solutions and a mixture in a 0.9% sodium chloride infusion stored in polypropylene syringes. Eur J Pharm Sci 2003 ; 19, 1: 31-36.
1882	Revue	Bosch EH, Van Doorne H, Brouwers JRBJ, Marskamp A, Meevis RF. Decrease of sufentanil citrate concentration during formulation and application of an epidural infusion solution. Ziekenhuisfarmacie 1993 ; 9: 97-101.
1908	Revue	Boitquin L, Hecq JD, Evrard JM, Vanbeckbergen D, Jamart J, Galanti L. Long-term stability of sufentanil citrate with levobupivacaine hydrochloride in 0.9% sodium chloride infusion PVC bags at 4°C. J Pain Symptom Manage 2004 ; 28, 1: 4-6.
1909	Revue	Farhang-Asnefi S, Barre J, Callaert S, Boutros A, Causse R, Thebault A. Compatibilité et stabilité du mélange bupivacaine-sufentanil en poche. J Pharm Clin 2000 ; 19: 248-251.
1925	Revue	Trissel LA, Williams KY, Gilbert DL. Compatibility screening of linezolid injection during simulated Y-site administration with other drugs and infusion solutions. J Am Pharm Assoc 2000 ; 40: 515-519.
1938	Revue	Boitquin LP, Hecq JD, Vanbeckbergen DF, Jamart J, Galanti LM. Stability of sufentanil citrate with levobupivacaine hydrochloride in NaCl 0.9% after microwave freeze-thaw treatment. Ann Pharmacotherapy 2004 ; 38: 1836-1839.

1962	Revue	Hecq JD, Boitquin L, Evrard JM, Vanbeckbergen D, Jamart J, Galanti L. Long term stability of sufentanyl citrate with levobupivacaine hydrochloride in 0.9% sodium chloride infusion P.V.C bags at 4°C. Pharmakon 2004 ; 36, 1: 8-14.
2118	Revue	Chapalain-Pargade S, Laville I, Paci A, Chachaty E, Mercier L, Bourget Ph. Microbiological and physicochemical stability of fentanyl and sufentanil solutions for patient-controlled delivery-systems. J Pain Symptom Manage 2006 ; 32, 1: 90-97.
2119	Revue	Westphal M, Hohage H, Buerckle H, Van Aken H, Ermert T, Brodner G. Adsorption of sufentanil to epidural filters and catheters. Eur J Anaesthesiol 2003 ; 20: 124-126.
2138	Revue	Brodner G, Ermert T, Van Aken H et al. Stability of a sufentanil-ropivacaine mixture in a glass and a PVC reservoir. Eur J Anaesthesiol 2002 ; 19: 295-297.
2141	Revue	Barinian N, Chanteux H, Viaene E, Servais H, Tulkens PM. Stability and compatibility study of cefepime in comparaision with ceftazidime for potential administration by continuous infusion under conditions pertinent to ambulatory treatment of cystic fibrosis patients and to administration in intensive care units. J Antimicrob Chemother 2003 ; 51: 651-658.
2146	Revue	Trissel LA, Xu QA, Baker M. Drug compatibility with new polyolefin infusion solution containers. Am J Health-Syst Pharm 2006 ; 63: 2379-2382.
2196	Revue	Trissel LA, Trusley C, Ben M, Kupiec TC. Physical and chemical stability of palonosetron hydrochloride with five opiate agonists during Y-site administration. Am J Health-Syst Pharm 2007 ; 64, 11: 1209-1213.
2231	Revue	de Jongh R, Hens R, Basma V, mouton JW, Tulkens PM, Carryn S. Continuous versus intermittent infusion of temocillin, a directed spectrum penicillin for intensive care patients with nosocomial pneumonia: stability, compatibility, population pharmacokinetic studies and breakpoint selection. J Antimicrob Chemother 2008 ; 61, 2: 382-388.
2280	Revue	Shields DE, Aclan J, Szatkowski A. Chemical stability of admixtures combining ziconotide with fentanyl or sufentanil during simulated intrathecal administration. Int J Pharm Compound 2008 ; 12, 5: 463-466.
2319	Revue	Janssen K, Wisselo R, Geerlings C, Schouten J.P. Chemical stability of a solution of bupivacaine hydrochloride 0.125% and sufentanil citrate 0.5 µg/ml for filling syringes using a repeater pump. EJHP Science 2009 ; 15, 1: 11-14.
3012	Revue	Sullivan T, Forrest J.M, Leclair G. Compatibility of Cloxacillin Sodium with Selected Intravenous Drugs During Simulated Y-Site Administration Hosp Pharm 2015 ; 50, 3: 214-220.
3294	Revue	Humbert-Delaloye V, Berger M, Voirol P, Pannatier A. In vitro compatibility of remifentanil hydrochloride and sufentanil citrate with selected drugs EJHP 2012 ; 19: 57-64.
3380	Revue	Eckle V-S, Heim E, Hahn M, Grasshoff C. Incompatibility of Pirtramide with Cephalosporins. Ann Pharmacotherapy 2013 ;47:426-427.
3385	Revue	Raverdi V, Ampe E, Hecq JD, Tulkens PM. Stability and compatibility of vancomycin for administration by continuous infusion. J Antimicrob Chemother 2013 ; 68: 1179-1182.
3408	Revue	Tollec S, Touzin K, Pelletier E, Forest J.M. Evaluation visuelle de la compatibilité physique de la naloxone avec d'autres médicaments intraveineux usuels. Pharmactuel 2013 ; 46, 1 : 16-21.

3504	Laboratoire	Parecoxib (Dynastat®) - Summary of Product Characteristics Pfizer 2012
3601	Laboratoire	Cisatracurium Actavis - Résumé des Caractéristiques du Produit Actavis 2012
3644	Laboratoire	Calcium gluconate® - Summary of Product Characteristics Hameln Pharmaceuticals 2010
3705	Revue	Knudsen L, Eisend S, Haake N, Kunze T. Physicochemical compatibility of commonly used analgesics and sedatives in the intensive care medicine. EJHP 2014 ;21:161-166
3824	Revue	Boudi S, Roy H, Forest JM, Leclair G. Compatibilité physique de l'association amoxicilline-acide clavulanique en injection avec plusieurs autres médicaments lors d'une administration en Y. Pharmactuel 2023 2023;56,3:91-98
3964	Revue	Audet M.A, Forest E, Friciu M, Forest J.M, Leclair G. Compatibilité du citrate de caféine injectable avec plusieurs autres médicaments. Pharmactuel 2017 ; 50,1 : 27-33.
4011	Revue	Gersonde F, Eisend S, Haake N, Kunze T. Physicochemical compatibility and emulsion stability of propofol with commonly used analgesics and sedatives in an intensive care unit. EJHP 2016 2016;0:1-11
4080	Revue	Zbytovska J, Gallusova J, Vidlarova L, Prochazkova K, Simek J, Stepanek F. Physical Compatibility of Propofol-Sufentanil Mixtures. Anaesthesia 2017 ;124,3:776-781
4162	Revue	Sorrieul J, Robert J, Gibory V, Kieffer H, Folliard C, Dupouiron D, Devys C. Stability of sufentanil and baclofen mixtures for intrathecal analgesia at different concentrations in polypropylene syringes. Ann Pharm Fr 2018 ;76,6:444-452
4319	Revue	Lessard J-J, Caron E, Schérer H, Forest J-M, Leclair G. Compatibility of Y-site Injection of Meropenem Trihydrate With 101 Other Injectable Drugs. Hosp Pharm 2020 ; 55, 5: 332-337.
4389	Revue	Côté K, Correal F, Metras M.E, Friciu M, Forest J.M, Leclair G. Compatibilité physique des médicaments administrés en Y aux soins intensifs, en particulier la dexmédétomidine, le lévოსимendan et la kétamine. Pharmactuel 2019 ;52,4:206-213
4496	Revue	Sorrieul J, Robert J, Dupouiron D, Devys, C. Stability Study of Admixtures Combining Ziconotide With Morphine or Sufentanil in Polypropylene Syringes. Neuromodulation 2020 ; 24, 7: 1145-1156.
4522	Revue	Lin Q, Van Schepdael A, Adams E. Six months stability investigation of sufentanil and ropivacaine/levobupivacaine admixtures in plastic container by LC-UV. J Pharm Biomed Anal 2020
4742	Revue	Macoviciuc M, Nguyen C, Forest J-M, Leclair G. Compatibilité physique de l'acétaminophène injectable avec 102 autres médicaments lors d'une administration en Y. Pharmactuel 2022 ; 55, 4: 247-255.



Dictionnaire

 Antalgique	 Injectable
 Noms commerciaux	 Stabilité des solutions
 Contenant	 Molécule
 Concentration	 Température
 Conservation	 Durée de stabilité
 Biosimilaire	 Données conflictuelles
 Bibliographie	 Verre
 Chlorure de sodium 0,9%	 A l'abri de la lumière
 Jour	 Non précisée
 Polyvinyl chlorure	 Glucose 5%
 Aucun	 Polyéthylène
 Polyolefine	 Lumière
 Heure	 Seringue polypropylène
 Stabilité en mélange	 Solvant
 Molécule	 Non précisé
 Polypropylène	 Facteur influençant la stabilité
 Filtration	 Provoque
 Adsorption	 Diminution de la concentration
 Compatibilités	 Compatible
 Incompatibilité non précisée	 Incompatible
 Eau pour préparation injectable	 Instabilité chimique
 Solvant spécifique	 NaCl 0,9% ou glucose 5%
 Voie d'administration	 Intraveineuse
 Perfusion continue	 Sous cutanée
 Perfusion SC continue	 Bibliographie
 Dictionnaire	